



DRILLING LOG



FROM :(mt) 100

TO :(mt) 2800

SCALE : 1/ 1000

Well Name : LONGTOM-3

Company : Nexus Energy

Country : AUSTRALIA

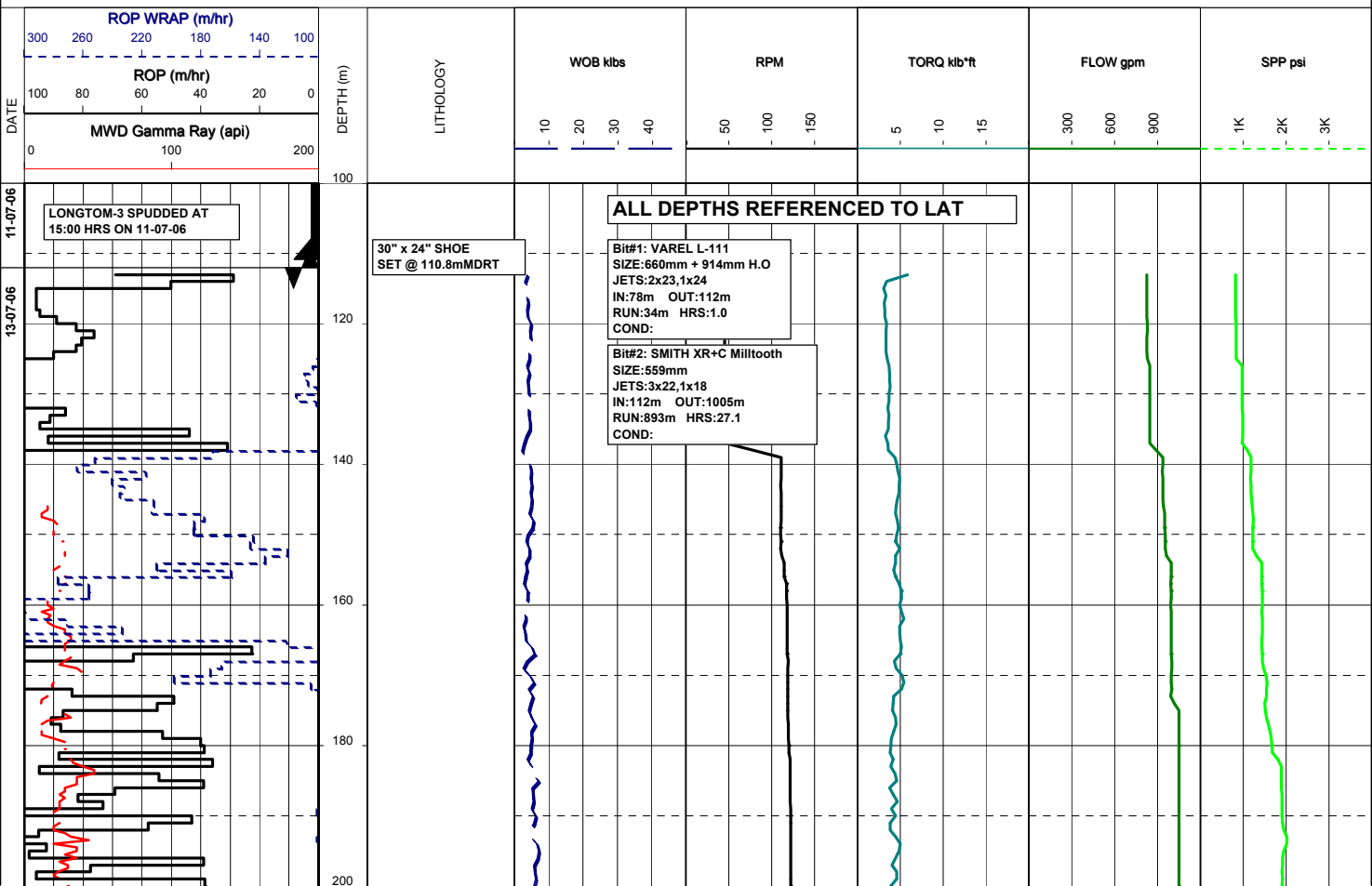
RT-MSL (m): 21.5

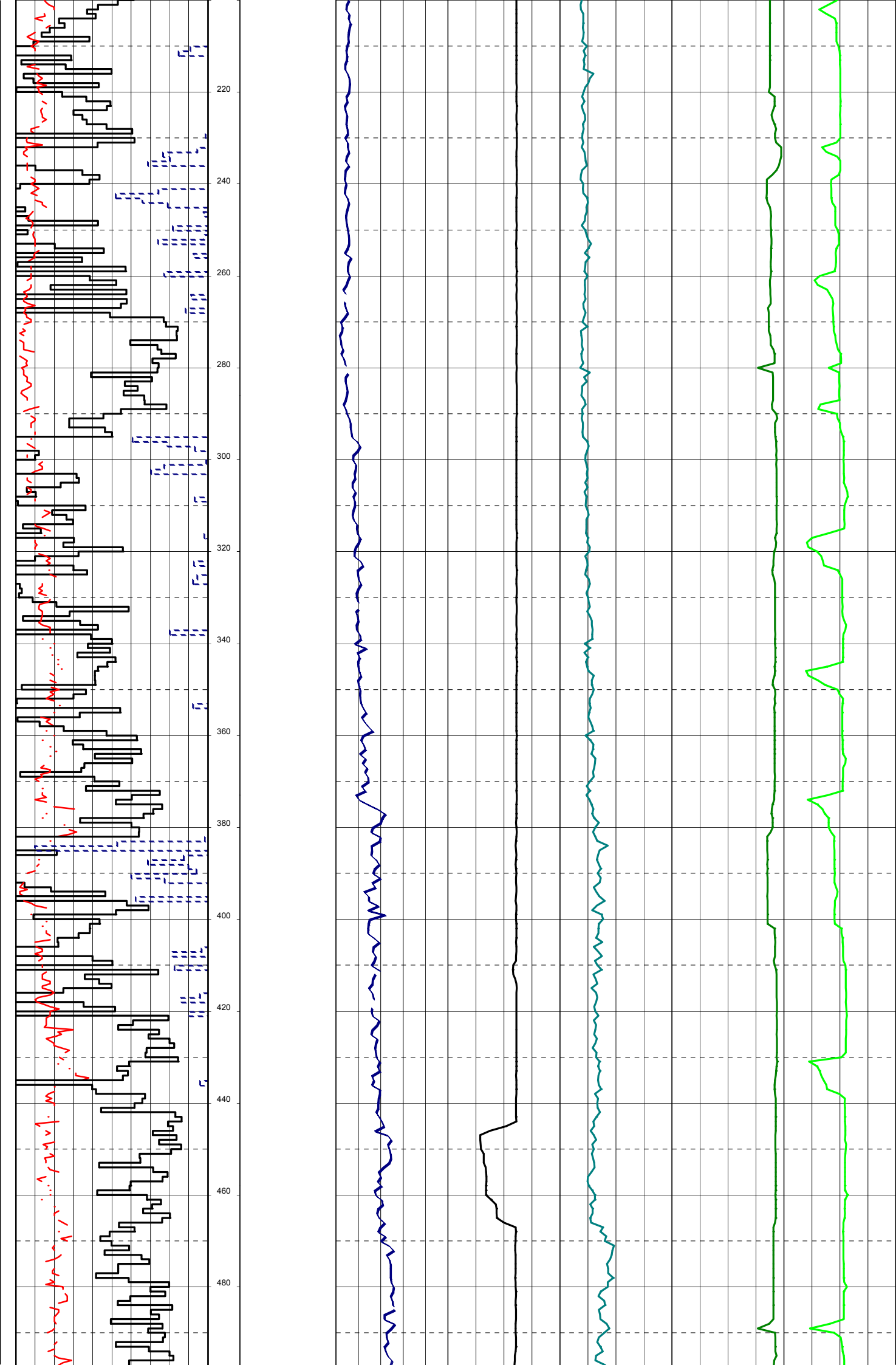
Final TD (mMDRT): m

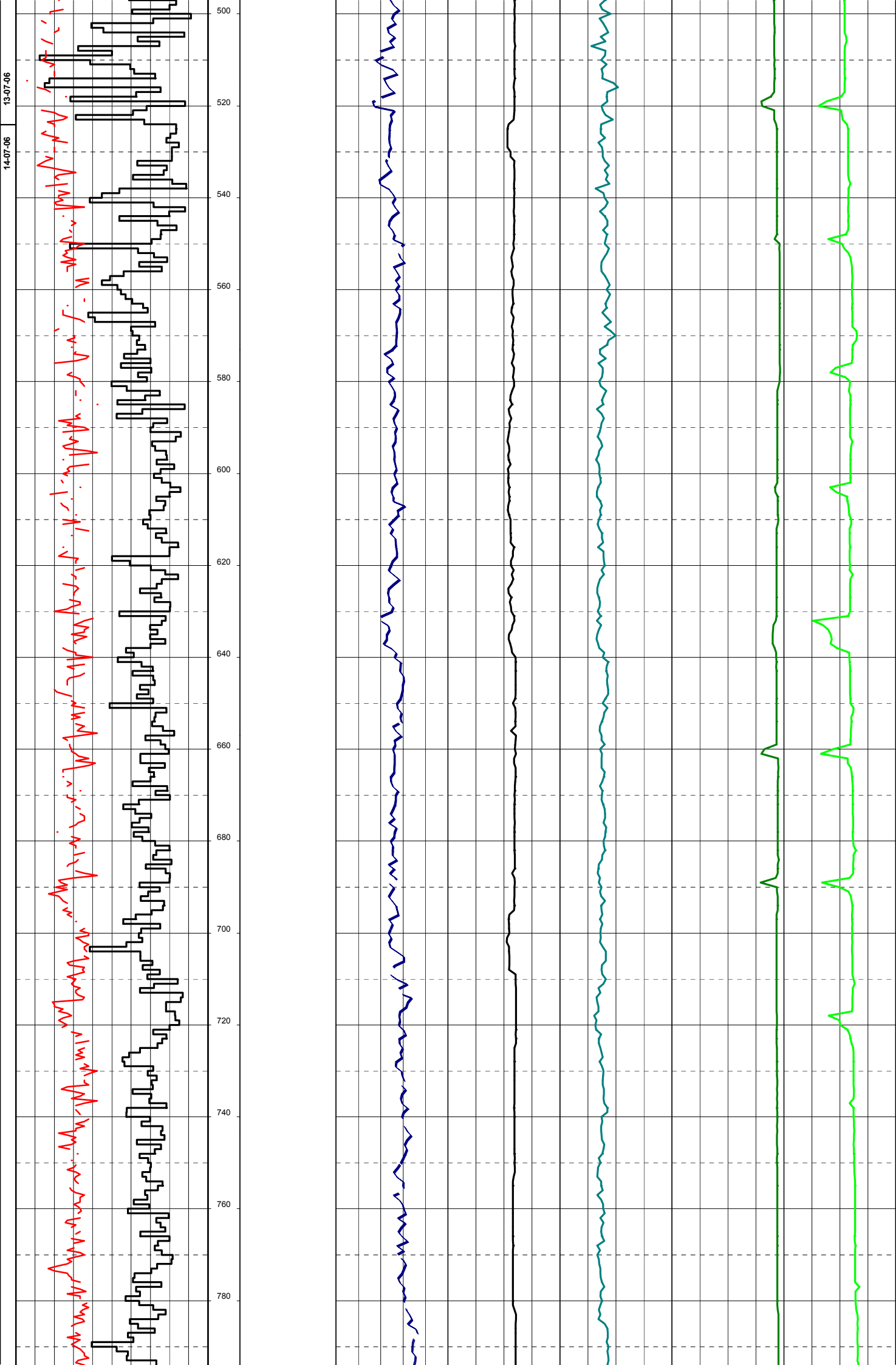
RT-SEABED (m): 78.2

Final TVD (m TVDSS): m

Generated by ALS Package

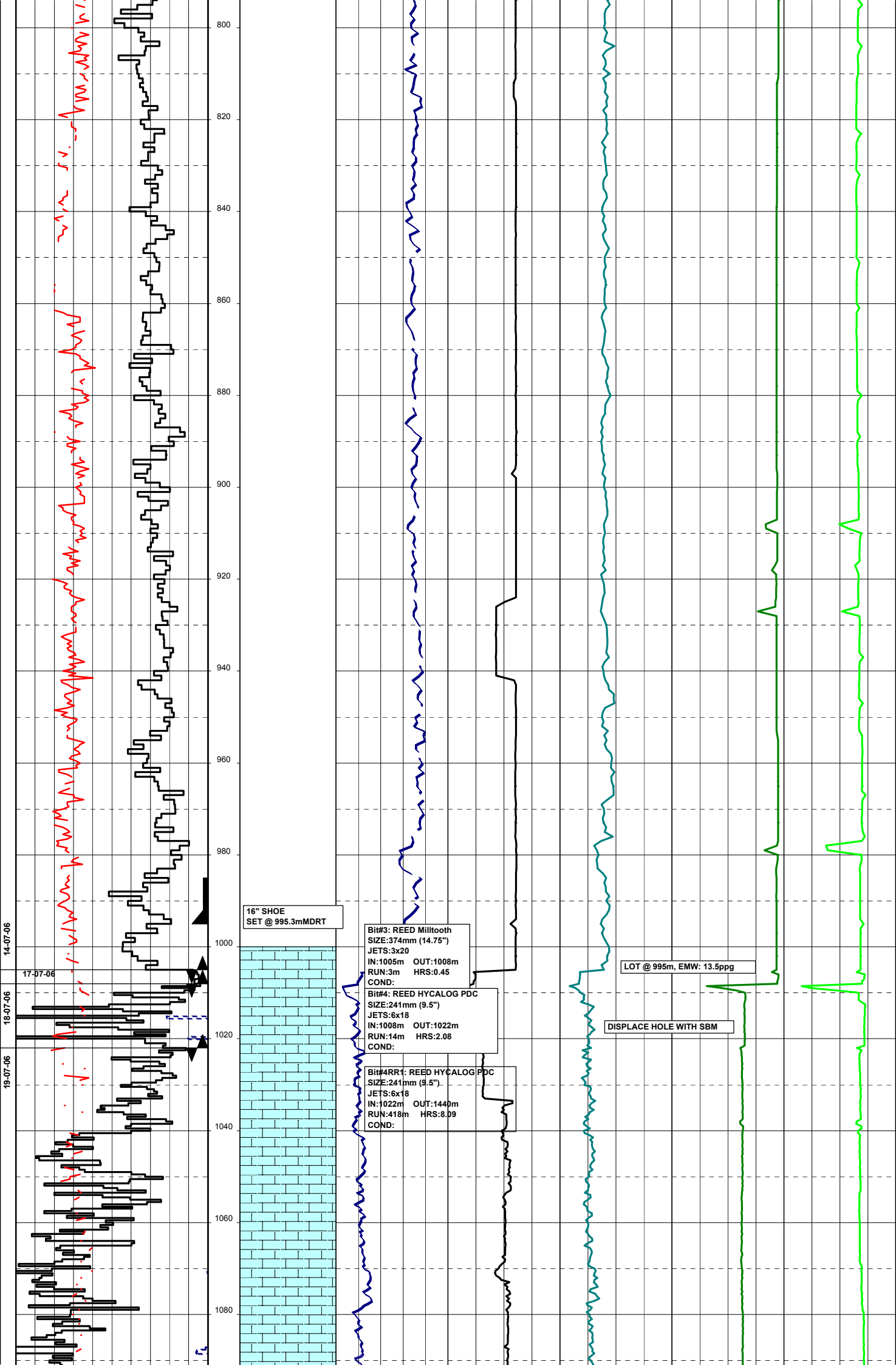






14-07-06

13-07-06



16" SHOE
SET @ 995.3mMDRT

Bit#3: REED Milltooth
SIZE:374mm (14.75")
JETS:3x20
IN:1005m OUT:1008m
RUN:3m HRS:0.45
COND:

Bit#4: REED HYCALOG PDC
SIZE:241mm (9.5")
JETS:6x18
IN:1008m OUT:1022m
RUN:14m HRS:2.08
COND:

Bit#4RR1: REED HYCALOG PDC
SIZE:241mm (9.5")
JETS:6x18
IN:1022m OUT:1440m
RUN:418m HRS:8.09
COND:

LOT @ 995m, EMW: 13.5ppg

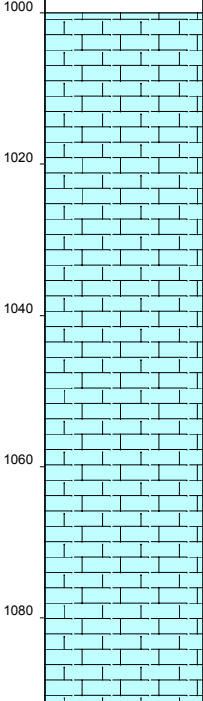
DISPLACE HOLE WITH SBM

14-07-06

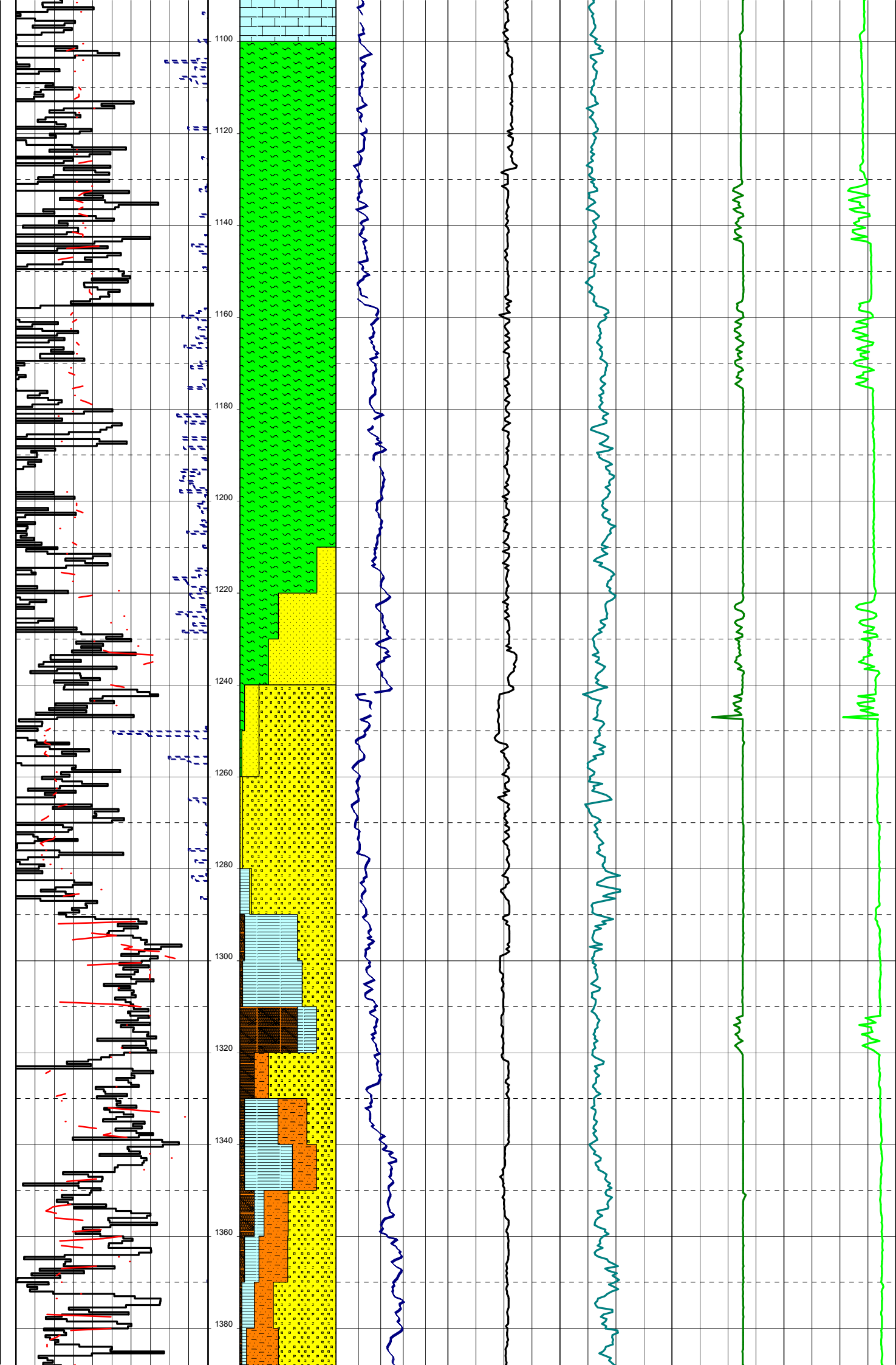
17-07-06

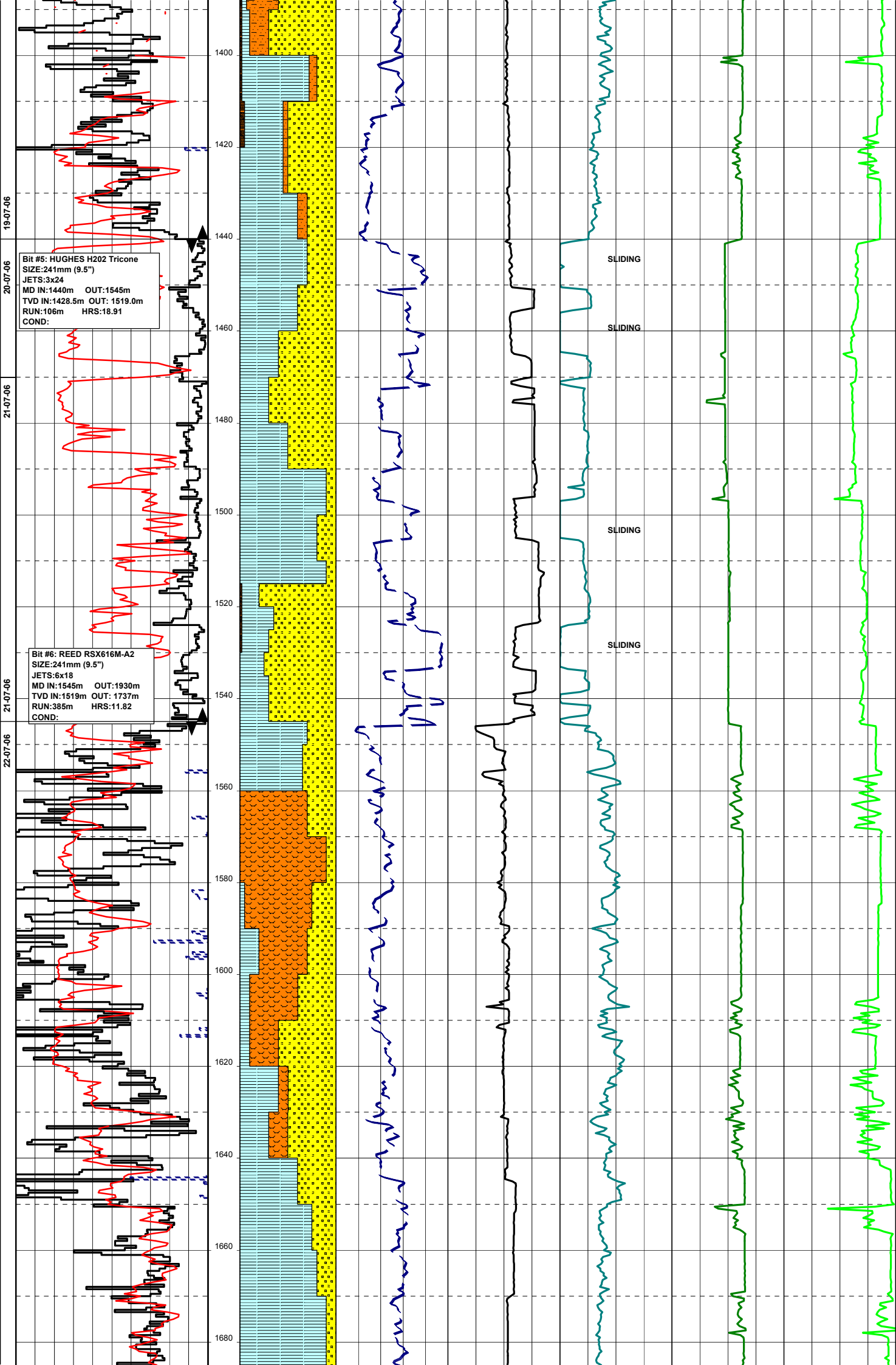
18-07-06

19-07-06



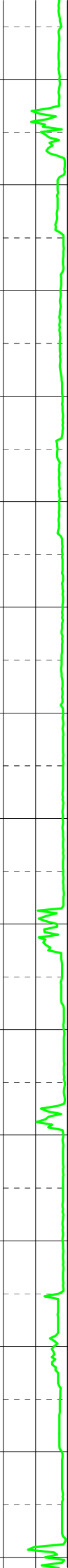
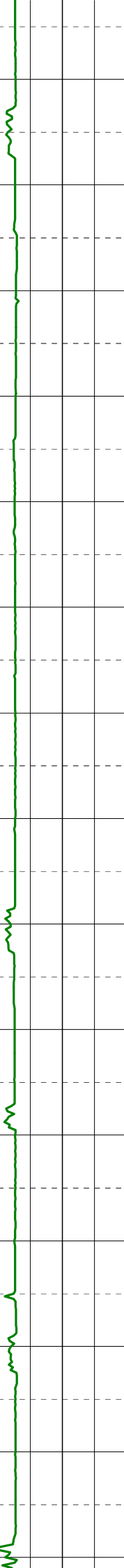
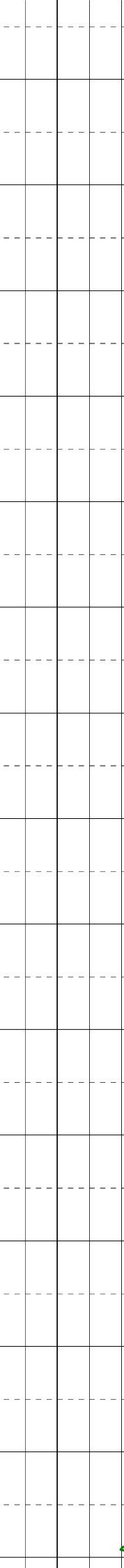
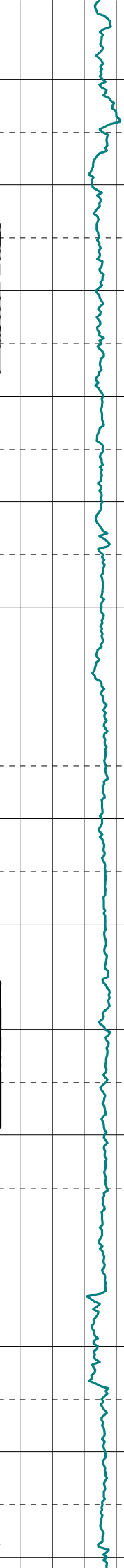
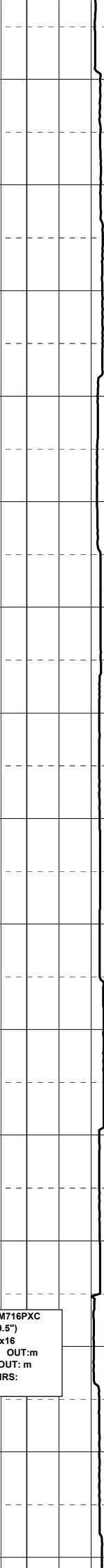
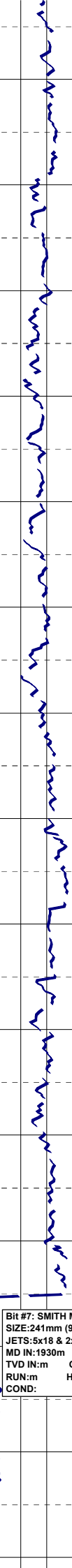
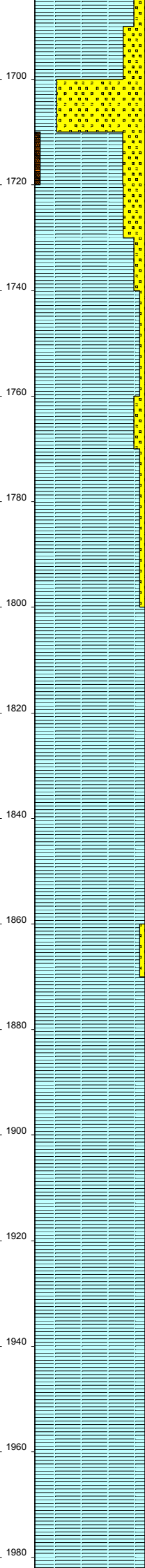
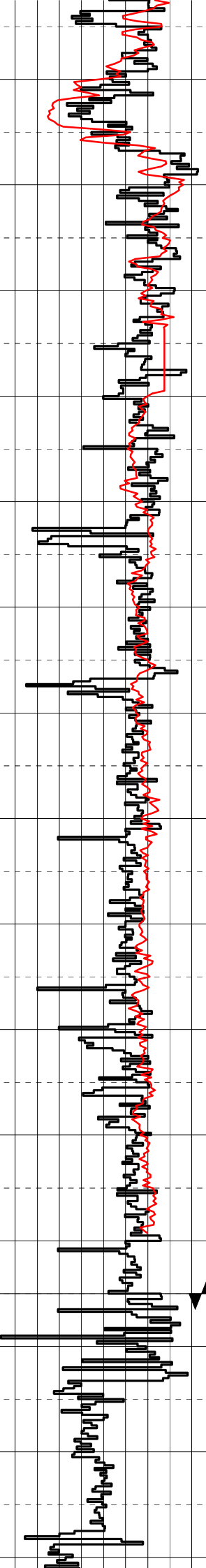
Handwritten red notes:
 1. 1005m to 1008m
 2. 1008m to 1022m
 3. 1022m to 1440m



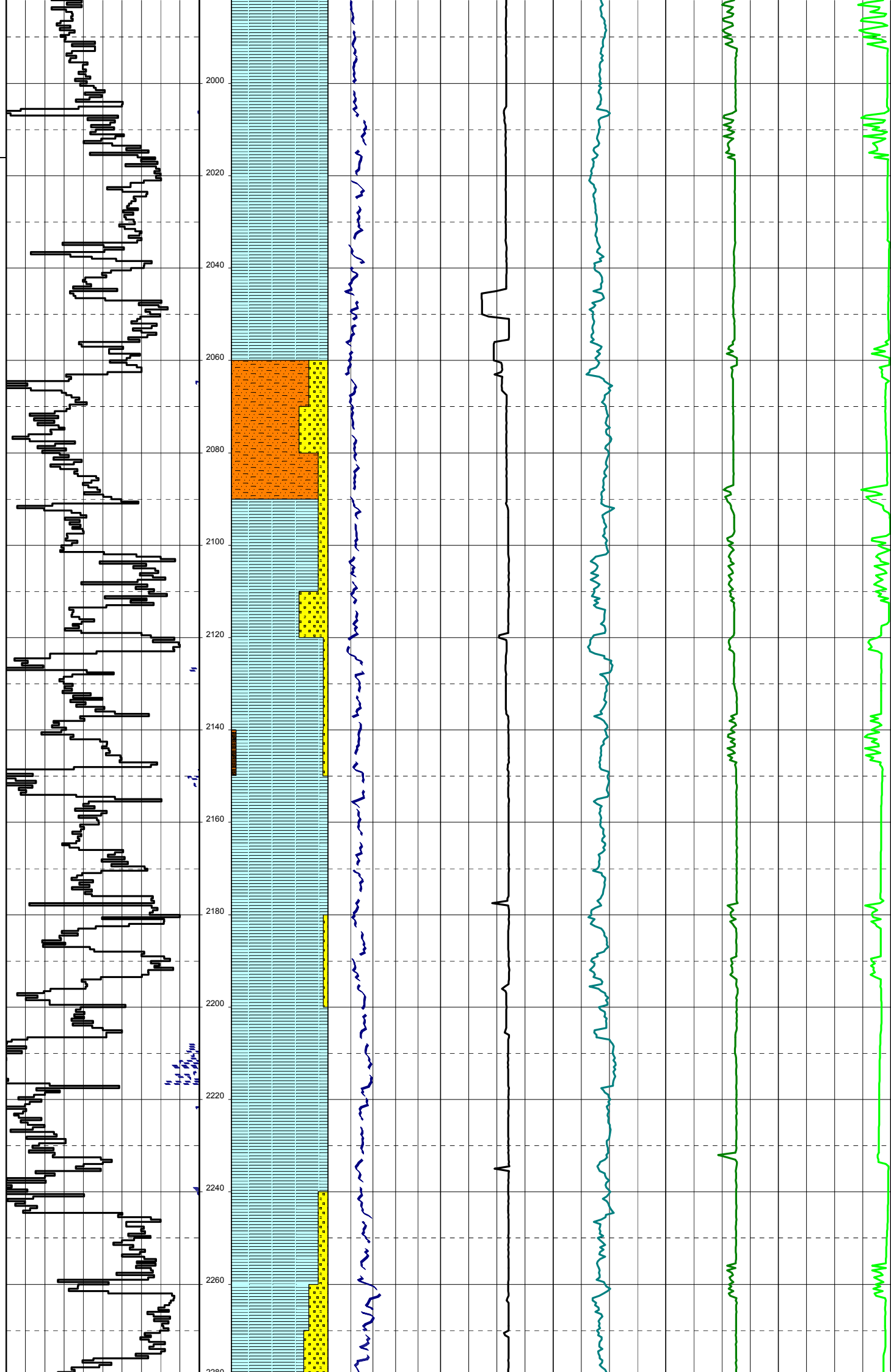


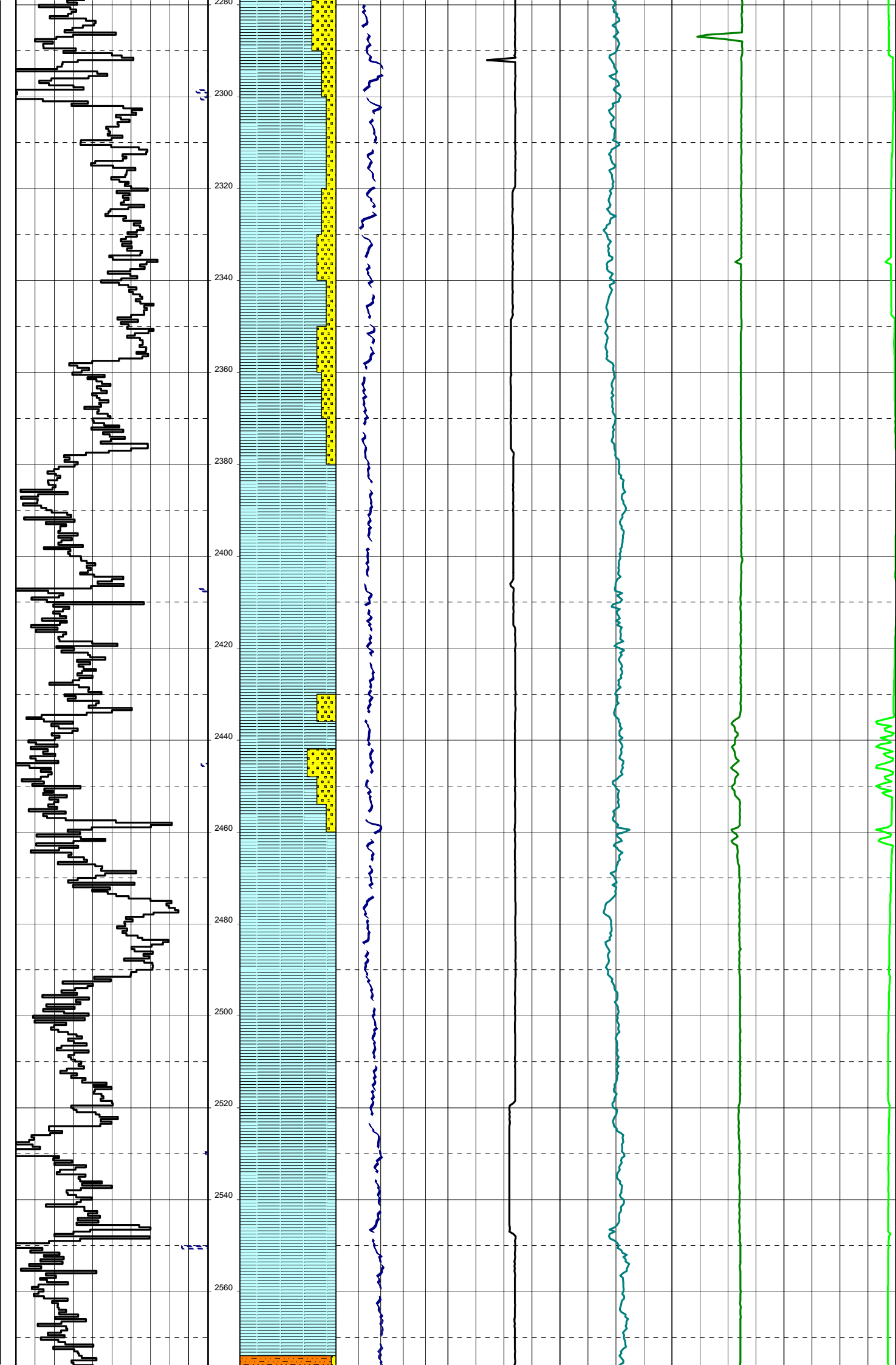
23-07-06 22-07-06

1700
1720
1740
1760
1780
1800
1820
1840
1860
1880
1900
1920
1940
1960
1980



Bit #: SMITH M716PXC
SIZE:241mm (9.5")
JETS:5x18 & 2x16
MD IN:1930m OUT:m
TVD IN:m OUT: m
RUN:m HRS:
COND:





25-07-06

